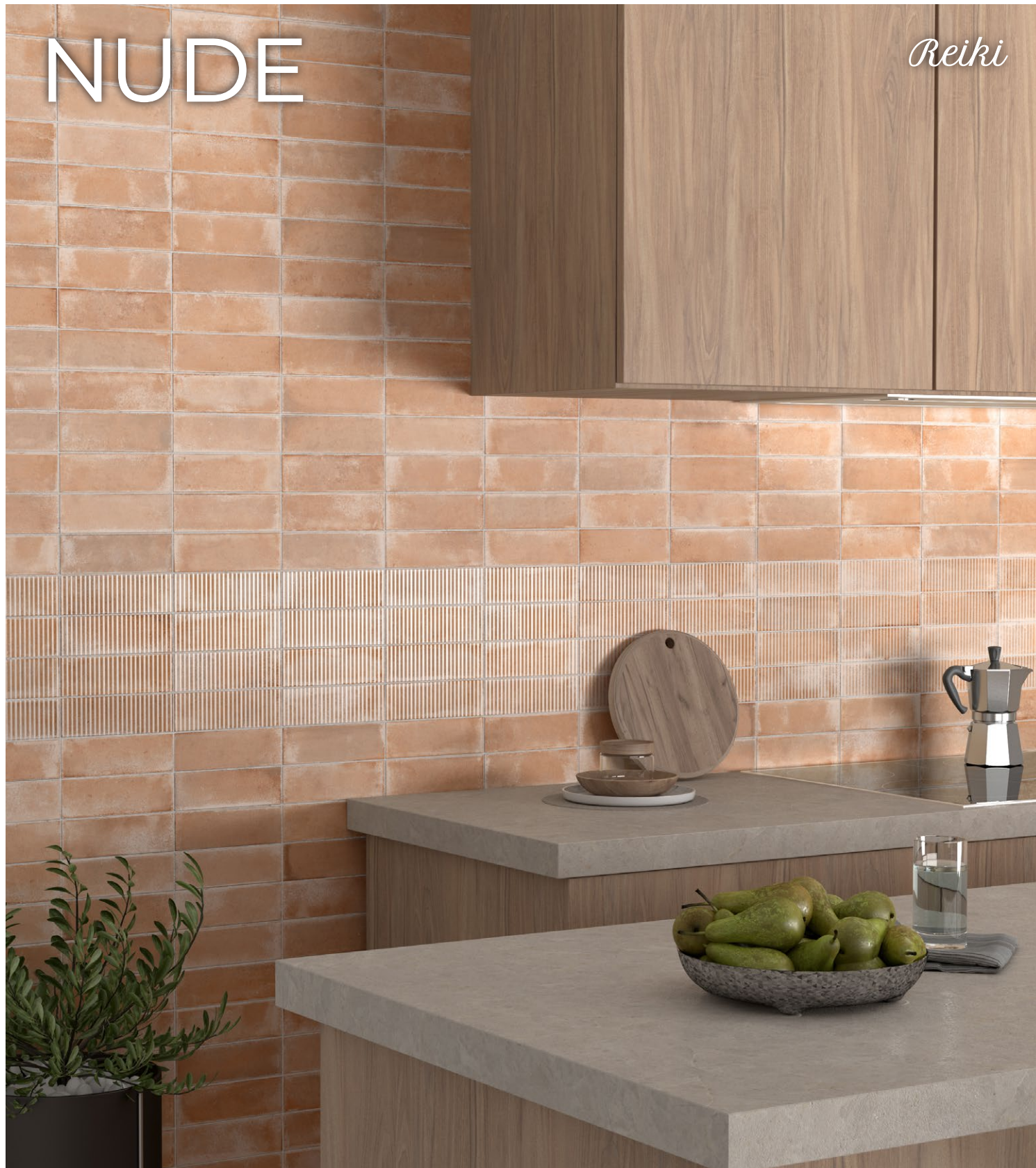




NUDE

Reiki

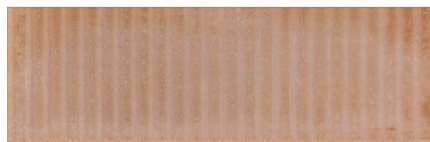


BEPRENU28



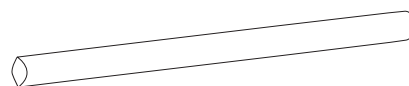
- 2.5x8 -

BEPRENU28STR



- 2.5x8 stripe -

BEPRENUBN18



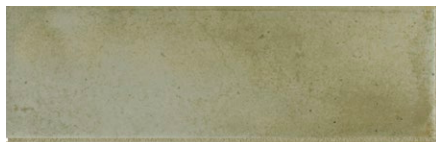
- .5x8 jolly -

Reiki

SAGE



BEPRESG28



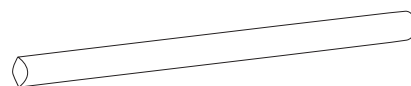
- 2.5x8 -

BEPRESG28STR



- 2.5x8 stripe -

BEPRESGBN18



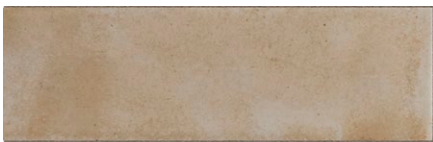
- .5x8 jolly -

SAND

Reiki



BEPRESN28



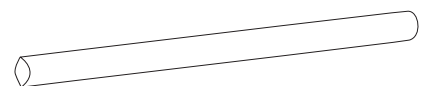
- 2.5x8 -

BEPRESN28STR



- 2.5x8 stripe -

BEPRESBNB18



- .5x8 jolly -

Reiki

SEA



BEPRESE28



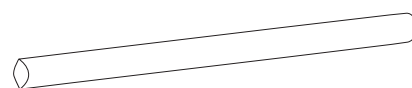
- 2.5x8 -

BEPRESE28STR



- 2.5x8 stripe -

BEPRESEBN18



- .5x8 jolly -

SMOKE

Reiki

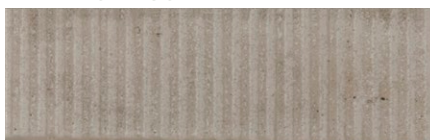


BEPRESM28



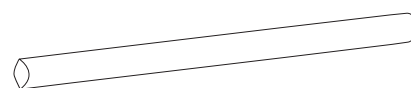
- 2.5x8 -

BEPRESM28STR



- 2.5x8 stripe -

BEPRESMBN18



- .5x8 jolly -

Reiki

WHITE

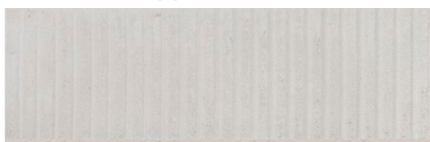


BEPREWH28



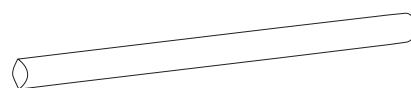
- 2.5x8 -

BEPREWH28STR



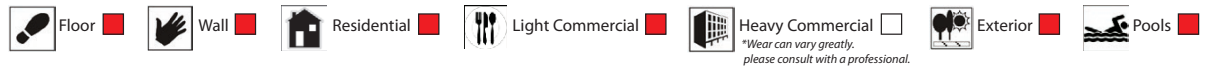
- 2.5x8 stripe -

BEPREWHBN18

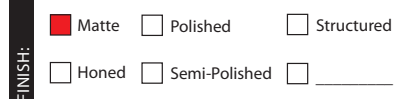
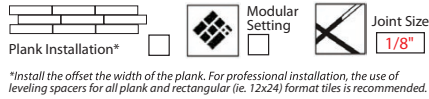


- .5x8 jolly -

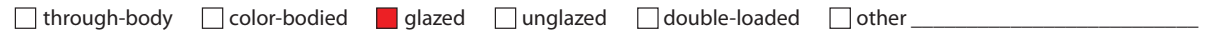
Suggested Applications



Installation Suggestions



Porcelain Type




Shade Variation



Slip Resistance

ASTM C-1028
ANSI A137.1
DIN 51097/51130

DCOF	Values	Applications
<div><div>≥0.42</div><div></div></div>	0.42	Recommended Standard DCOF value for wet/dry commercial flooring
	0.65	Recommended Standard DCOF value for ADA ramps

DIN 51130

*R9: Industry Standard/ADA Requirements

**R11: Recommended For Exteriors

☒ R9* (3-10°)

☐ R10 (10-19°)

☐ R11** (19-27°)

☐ R12 (27-35°)

☐ R13 (>35°)

DIN 51097

Class	Typical Applications	Critical Angle
A	Barefoot, but mainly dry aisles and walkways, dry changing areas	≥12°
B	Shower rooms, pool surrounds, wet changing areas, disinfectant spray areas (plus all Class A areas)	≥18°
C	Areas constantly under water, e.g. steps into pools, foot baths, inclined pool surrounds, jacuzzis (plus all Class A&B areas)	≥24°

Scratch Resistance

MOH'S SCALE
UNI EN ISO
10545.6

7

MINERAL

1. Talc (Talc)	6. Microline (Glass, Glazed Tile)
2. Gypsum (Fingernail)	7. Quartz (Unglazed Porcelain)
3. Calcite (Penny)	8. Topaz (Granite)
4. Fluorite (Some Marbles)	9. Corundum (Ruby)
5. Apatite (Knife Blade)	10. Diamond (Diamond)
Industry standard ≤175mm²	

Wear Resistance

PEI RATING
UNI EN ISO
10545.7

- ☐ Class 1: Walls only
 - ☐ Class 2: Residential floors w/minimal abrasive traffic
 - ☐ Class 3: Residential interiors/light commercial traffic
 - Class 4: Medium commercial applications
 - ☐ Class 5: All commercial applications/heavy traffic
- *Wear can vary greatly. please consult with a professional.*

Stain Resistance

ASTM C1378-04
UNI EN ISO
10545.14

5

- 5: Removed after 5 minutes (hot water running)
- 4: Removed by manual cleaning (weak detergent)
- 3: Removed by mechanical cleaning (strong detergent)
- 2: Removed by immersion (24 hrs in suitable solvent)
- 1: Stain not removed

Water Absorption

ASTM C-373
UNI EN ISO
10545.3



Absorbs 0-.5%	Absorbs .5-3%	Absorbs 3-7%	Absorbs 7% +
Impervious Interior/Exterior Frost Resistant	Vitreous Interior/Exterior Frost Resistant	Semi-Vitreous Indoor Use Only	Non-Vitreous Indoor Use Only

Breaking Strength

ASTM C648
UNI EN ISO
10545.4

>35



Facial Dimension

ASTM c499-09
UNI EN ISO
10545.02

	Standard	Tolerance	Result
flatness	±5mm	±.5%	PASS
thickness	±6mm	±.5%	PASS
straightness	±4.5mm	±.5%	PASS
squareness	±5.4mm	±.6%	PASS
sides L/W	±1.1mm ±4.5mm	±.5%	PASS

Chemical Resistance

ASTM C650
UNI EN ISO
10545.13



Allowances for:	result
Acid	GLA
Bases	GHA
Chemicals	GA

Leed Information



REQUIREMENTS
FOR COMMERCIAL
INTERIORS/NEW
CONSTRUCTION

Sustainable Sites Site selection	1 Point
SS CREDIT 1 Heat Island Effect-non roof Material with a solar reflectant index of at least 29.	<input type="checkbox"/>
Energy & Atmosphere	1 Point
EA CREDIT 4 Green Power: Products that optimize energy performance for floors and walls using thermal conductivity. BTU-FT	<input type="checkbox"/>
Indoor Environmental Quality Low-Emitting Materials-Flooring Systems	1 Point
IEQ CREDIT 3.1-7 Green Cleaning: Reducing occupants exposure to hazardous cleaning chemicals.	<input type="checkbox"/>
IEQ CREDIT 4.1 Low Emitting Adhesives: Products less than 65 G/L VOC	<input type="checkbox"/>
IEQ CREDIT 4.3 Low Emitting Materials: Flooring systems.	<input type="checkbox"/>

Materials & Resources	1 Point	2 Points
M&R CREDIT 2 Construction Waste Management: Recycling salvaged construction waste in to new reusable materials.	50% <input type="checkbox"/>	70% <input type="checkbox"/>
M&R CREDIT 4.1-4.2 Recycled Content: The sum of post consumer plus 1/2 of the pre consumer reps at least 10-20% of total value of materials.	10% <input type="checkbox"/>	20% <input type="checkbox"/>
M&R CREDIT 5 Regional Materials: Materials manufactured within 500 miles of the project site.	10% <input type="checkbox"/>	20% <input type="checkbox"/>
Innovation in Design	1-5 Points	
ID CREDIT 1 Innovation in Design Measurable exemplary environmental performance.	<input type="checkbox"/>	

Type:
Porcelain Stoneware

Product Line:
REIKI

The marketing name for this product is property of CTC-Beauty. This same product may be marketed under different names.