



ADMIRAL BLUE

BELADAB312



| 3x12 |

BELADAB312BEV



| 3x12 bevel |

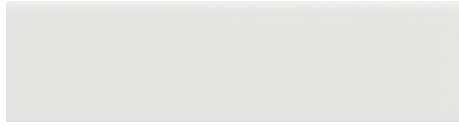
BELADABBN312



| 3x12 bullnose |

BIANCO

BELADBI312



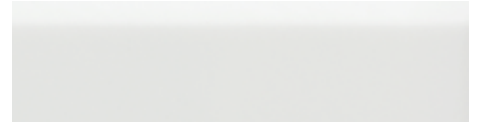
| 3x12 |

BELADBI312BEV



| 3x12 bevel |

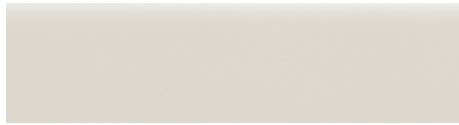
BELADBIBN312



| 3x12 bullnose |

CREAM

BELADCR312



| 3x12 |

BELADCR312BEV



| 3x12 bevel |

BELADCRBN312



| 3x12 bullnose |

GRIGIO

BELADGR312



| 3x12 |

BELADGR312BEV



| 3x12 bevel |

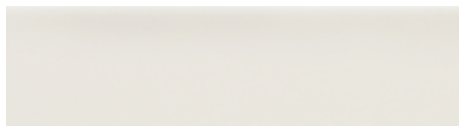
BELADGRBN312



| 3x12 bullnose |

MARFIL

BELADMA312



| 3x12 |

BELADMA312BEV



| 3x12 bevel |

BELADMABN312



| 3x12 bullnose |

MELANZANA

BELADME312



| 3x12 |

BELADME312BEV



| 3x12 bevel |

BELADMEBN312



| 3x12 bullnose |

NAVY BLUE

BELADNB312



| 3x12 |

BELADNB312BEV



| 3x12 bevel |

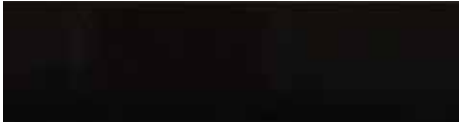
BELADNBBN312



| 3x12 bullnose |

NERO

BELADNE312



| 3x12 |

BELADNE312BEV



| 3x12 bevel |

BELADNEBN312



| 3x12 bullnose |

OCEAN BLUE

BELADOB312



| 3x12 |

BELADOB312BEV



| 3x12 bevel |

BELADOBBN312



| 3x12 bullnose |

ORANGE

BELADOR312



| 3x12 |

BELADOR312BEV



| 3x12 bevel |

BELADORBN312



| 3x12 bullnose |

PERLA

BELADPE312



| 3x12 |

BELADPE312BEV



| 3x12 bevel |

BELADPEBN312



| 3x12 bullnose |

RED

BELADRE312



| 3x12 |

BELADRE312BEV



| 3x12 bevel |

BELADREBN312



| 3x12 bullnose |

SAGE

BELADSA312



| 3x12 |

BELADSA312BEV



| 3x12 bevel |

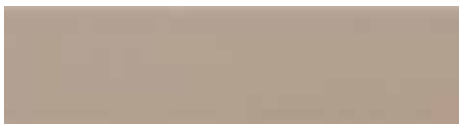
BELADSABN312



| 3x12 bullnose |

TAUPE

BELADTA312



| 3x12 |

BELADTA312BEV



| 3x12 bevel |

BELADTABN312



| 3x12 bullnose |

YELLOW

BELADYE312



| 3x12 |

BELADYE312BEV



| 3x12 bevel |

BELADYE312



| 3x12 bullnose |

Product Specifications

Tile Thickness	5/16"
Minimum Grout Joint Recommendation	1/16"
Shade Variation	Low (V1)

D.C.O.F. Wet	Moisture Absorption	Breaking Strength	MOH's Rating	Chemical Resistance	Abrasion Resistance
<0.42	<20%	100-230 lbs	4.0-6.5	Resistant	N/A

COMMERCIAL USAGE

APPLICATION	INTERIOR			EXTERIOR	
	Residential	Light Commercial	Commercial	Residential	Commercial
Floors / Patios (covered & uncovered)					
Walls / Backsplashes	X	X	X		
Countertops*					
Pool Deckings					
Pool Linings					

RESIDENTIAL USAGE

APPLICATION	Walls	Countertops*	Exterior Patios	Exterior Pool Decks
Floors				
	X			

*Bevel is not recommended for countertops

Notes:

- Suitable for exterior walls in non-freezing climates when proper installation methods are followed.
- Darker colors may show scratches.

The marketing name for this product is property of Ideal Tile Corp. This same product may be marketed under different names.